



ELVA DMS
AUTOMOTIVE DEALER MANAGEMENT SYSTEM

Case Study: The Elva DMS solution for a public transport company



About the company

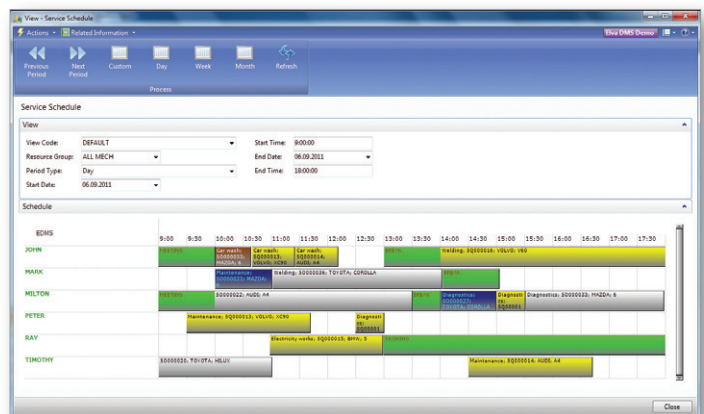
The CATA Company was established in 1954. CATA is one of the biggest public transport companies in Latvia. The company has almost 200 buses in operation, each with a capacity of 16-44 seats, covering local and international routes across Europe. As an average figure, the company's fleet covers 270 routes daily. CATA has a head office and five branches around the country. It also has agents who carry out bus maintenance at its headquarters and in its branches, amounting to more than a hundred people in total. CATA also provides truck repair and maintenance services to other companies as an external service.

Case description

The main purpose behind CATA implementing the Elva DMS system was to improve its accounting. Also, the company was eager to gain greater control of its assets in order to make its data more transparent and reduce fuel expenses. The previous, in-house system couldn't provide all the functionality that CATA needed to secure full internal profitability, efficiency, and control.

Founded solution

The Elva DMS solution ensures the required functionality for the company's in-house fleet management. Its functionality includes vehicle and equipment management, spare parts management, employee management, and workshop scheduling. All this functionality integrated in single system delivers to its user easy access to fleet repair and maintenance history, increased efficiency in workshop organisation, control over and improvement in fleet management workflow, precise fleet recourse planning, waybill processing and planning, and much more. This functionality for the CATA public transport company has improved its accounts and has also ensured a greater level of control of its assets. These were vital aspects for the successful development of internal processes and the rapid growth of the company.



 Microsoft Dynamics NAV



ELVA DMS
AUTOMOTIVE DEALER MANAGEMENT SYSTEM



"Our bookkeeping staff was reduced by more than 30% and there is still an option to continue this optimization process. Now we have better transparency in our data and more control over recourses to take action. As a result of this, we have managed to reduce our fuel expenses by approximately 10%. Just this reduction in fuel costs meant that returns from the investment in the Elva DMS solution were extremely fast – the solution has already paid back its initial costs several times over in the first year", comments Anda Maurite, CFO of CATA Ltd.

Efficiency tracking

Monitor the efficiency of your internal processes; measure the consistency of parts, vendors, pricing, delivery times, costs efficiency and much more.

Financial data integration

Elva DMS ensures all ERP system advantages. It integrates all your fleet data and the company's financial information into one system.

The main benefits ensured by Elva DMS:

Controlled fleet operations

Be aware of all operations regarding your fleet management. Control your fleet assets, realizing asset management as required.

Data integration

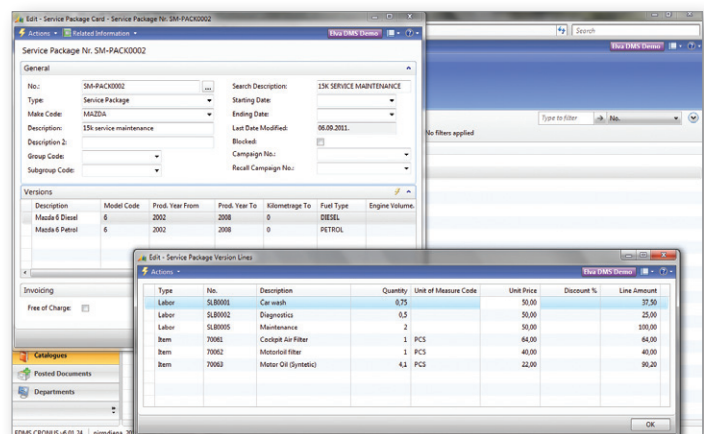
Organize all your information in one flexible and easy-to-use software solution. Service history, inventory, fixed assets, employee information, and much more functionality in one platform.

Improved workflow

Manage operational processes at a whole new level. Reduce double data entries and reduce paperwork. Assign mechanics to specific jobs based on workload, reducing workforce downtime.

Instant reporting

Elva DMS delivers data so that you can analyze your information quickly and accurately and make informed decisions based upon it.



Elva DMS is based on Microsoft Dynamics NAV with ready functionality for various company types such as vehicle dealers, workshops, the used car trade, transport companies, the spare part trade, public transportation, airports, vehicle importers, and organizations with an in-house fleet.

www.elvadms.com